

### Features

- Superior conducted attenuation performance
- Double stage power line filter
- Current rating 1A~20A
- Various output connections
- Practical solution for general devices

### Numbering System

#### 1 SS4 - 2 3 - 4

##### 1 Rated current

01,03,06,10,15,20

##### 2 Electrical schematic

2D,2F,2G

##### 3 Type of case (refer Mechanical drawing)

C1,C2

##### 4 Output connections (refer Output terminal)

**Q:** fast-on tab (6.3mm)

**S:** screw (M4)

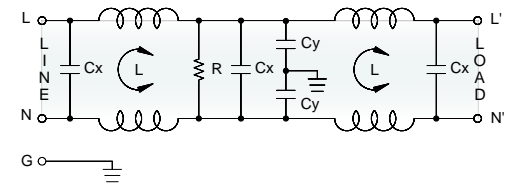
**W:** with wired (100mm)

### Marketing Applications

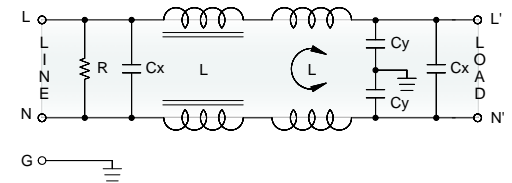
- Small household & Living appliances
- Energy management system
- Food processing equipment
- Automatic data processing system
- Automation

### Electrical Schematic

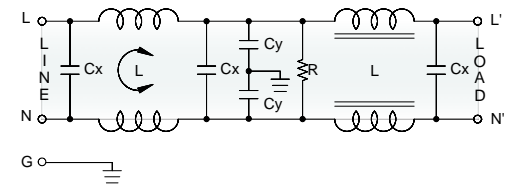
#### 2D



#### 2F



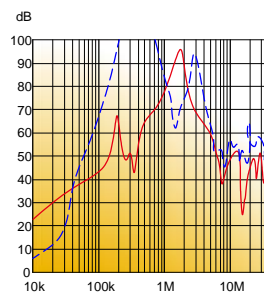
#### 2G



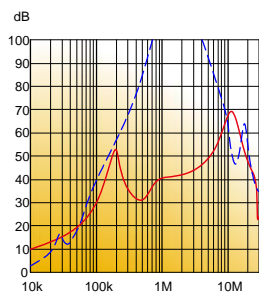
### Filter Attenuation

Insertion loss (dB) in 50 ohm system CISPR 17 (for reference only)

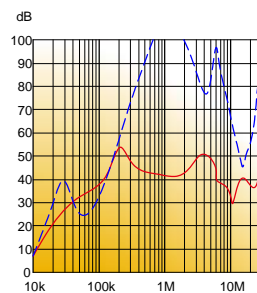
#### 1A~3A



#### 6A~10A






#### 15A~20A



Common mode / Asymmetric (L-G) ————  
 Differential mode / Symmetric (L-L) - - - - -

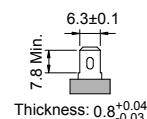
## Filter Selection Table ●

| Filter Part No. | Rated Current<br>@50°C [A] | Leakage Current<br>@250VAC/50Hz<br>[μA] | Inductance<br>@10KHz, 0.25V |      | Capacitance |            | Resistor<br>R<br>[Ω] | Output terminal   |   |   |
|-----------------|----------------------------|---|-----------------------------|------|-------------|------------|----------------------|---|---|---|
|                 |                            |   | [mH]                        | [μH] | Cx<br>[μF]  | Cy<br>[nF] |                      |  |  |  |
| <b>2D:</b>      |                            |   |                             |      |             |            |                      |   |   |   |
| 01SS4-2DC1      | 1                          | 600                                     | 3.7                         | —    | 0.1         | 3.3        | 2.2M                 | -Q  | -S  | -W  |
| 03SS4-2DC1      | 3                          | 600                                     | 1.8                         | —    | 0.1         | 3.3        | 2.2M                 | -Q  | -S  | -W  |
| 06SS4-2DC1      | 6                          | 600                                     | 0.7                         | —    | 0.1         | 3.3        | 2.2M                 | -Q  | -S  | -W  |
| 10SS4-2DC2      | 10                         | 600                                     | 0.3                         | —    | 0.1         | 3.3        | 2.2M                 | -Q  | -S  | -W  |
| 15SS4-2DC2      | 15                         | 600                                     | 0.9                         | —    | 0.1         | 3.3        | 2.2M                 | -Q  | -S  | -W  |
| 20SS4-2DC2      | 20                         | 600                                     | 0.5                         | —    | 0.1         | 3.3        | 2.2M                 | -Q  | -S  | -W  |
| <b>2F:</b>      |                            |   |                             |      |             |            |                      |   |   |   |
| 03SS4-2FC1      | 3                          | 1000                                    | 1                           | 30   | 0.22        | 4.7        | 330K                 | -Q  | -S  | -W  |
| 06SS4-2FC2      | 6                          | 1000                                    | 1.7                         | 70   | 0.22        | 4.7        | 330K                 | -Q  | -S  | -W  |
| 10SS4-2FC2      | 10                         | 1000                                    | 1.2                         | 40   | 0.22        | 4.7        | 330K                 | -Q  | -S  | -W  |
| <b>2G:</b>      |                            |   |                             |      |             |            |                      |   |   |   |
| 03SS4-2GC1      | 3                          | 1000                                    | 1                           | 30   | 0.22        | 4.7        | 330K                 | -Q  | -S  | -W  |
| 06SS4-2GC2      | 6                          | 1000                                    | 1.7                         | 70   | 0.22        | 4.7        | 330K                 | -Q  | -S  | -W  |
| 10SS4-2GC2      | 10                         | 1000                                    | 1.2                         | 40   | 0.22        | 4.7        | 330K                 | -Q  | -S  | -W  |

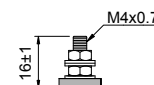
## Output Terminal

(unit: mm)

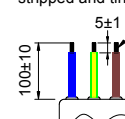
- **Q:** fast-on tab based on UL310 standard



- **S:** screw based on ISO4032 standard

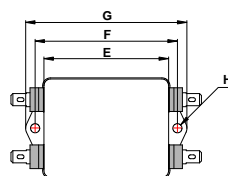
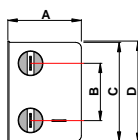


- **W:** with wired stripped and tinned



## Mechanical Drawing (unit: mm) ●

- C type



| Case | C1         | C2     |
|------|------------|--------|
| A    | 30         | 39.5   |
| B    | 22.4       | 30     |
| C    | 46         | 52.5   |
| D    | 48         | 54     |
| E    | 52         | 65.5   |
| F    | 61         | 74.7   |
| G    | 71         | 84.8   |
| H    | 2-Ø5.3x6.3 | 2-Ø4.8 |