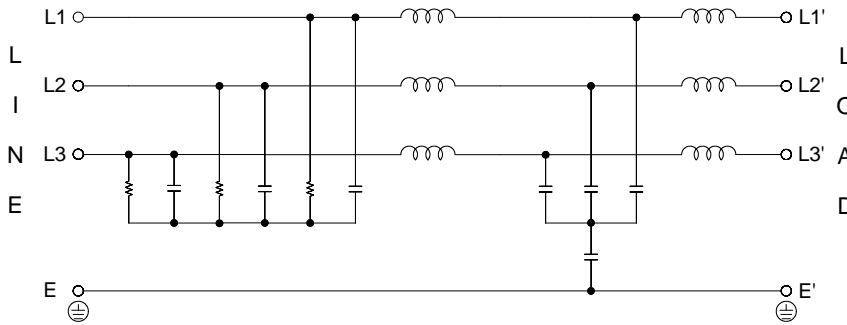


### Technical data and measuring conditions

- Rated current: 10~30A@50°C
- Max. continuous operating voltage: 3x600 / 347VAC
- Operating frequency: dc to 60Hz
- Operating temp. : -25°~ + 100° (25/100/21)
- Hi-pot. test voltage (for 2 sec.):  
P to E: 2750 VDC  
P to P: 2250 VDC
- Protection category: IP20
- Flammability corresponding to: UL 94V-2 or better
- MTBF@50°C/400V(Mill-HB-217F): 300,000 hours
- Design corresponding to: UL1283, UL60939, CSA 22.2 No.8-13, IEC/EN60939
- Overload capability: 4 x rated current at switch on; 1.5 x rated current for 1 min., once per hour



### Electrical schematic



### Features

- Premium conducted attenuation performance
- Current rating 10~30A
- 2-stage circuit is ideal for noisy environments
- Optimized for inverter
- Compact and lightweight
- Touch-safe connections with hinged safety covers

### Marketing applications

- Inverters
- UPS
- Power management system
- Automation equipment

### Filter selection table

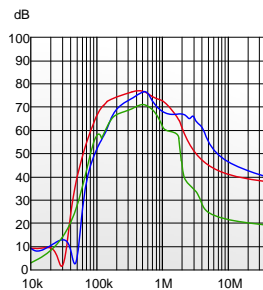
Filter PRJ No.	Rated Current @50°C [A]	Typical Drive* Power Rating [kW]	Leakage Current** @600VAC/50Hz [mA]	Power Loss @25°C/50Hz [W]
10H2DG7TW01	10	6	1.3	3.8
16H2DG7TW01	16	9.6	1.3	6.1
20H2DG7TW01	20	12	1.3	11.8
30H2DG7TW01	30	18	1.3	15.7

\*Calculated at rated current, 600 VAC and cos phi = 0.8. The exact value depends upon the efficiency of the drive, the motor and the entire application.

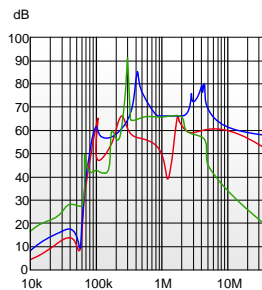
\*\*Standardized calculated leakage current acc. IEC60939 under normal operating conditions.

### Filter attenuation Insertion loss (dB) in 50Ω system CISPR 17

Common mode / Asymmetrical (P-E)

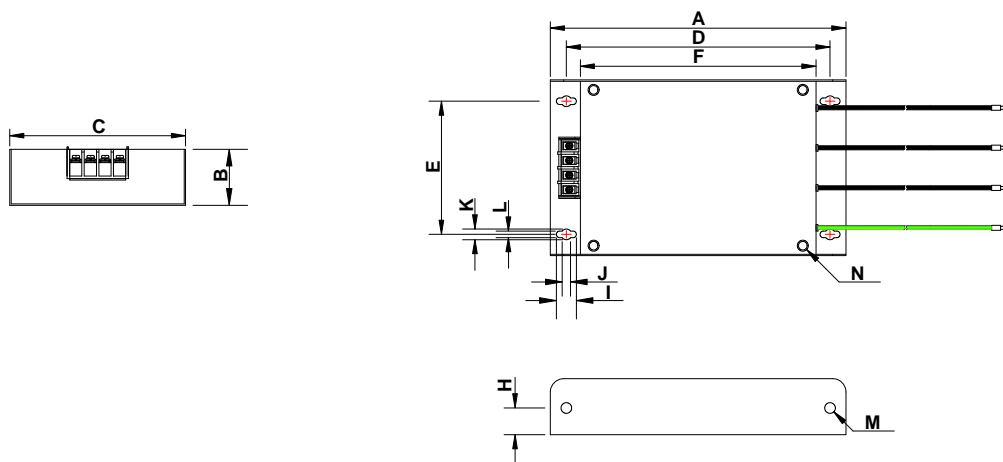


Differential mode / Symmetrical (P-P)



10A~16A ————  
20A ————  
30A ————

### Mechanical drawing



Dimensions (unit: mm) Tolerances according to ISO 2768-m / EN 22768-m

Code	10A	16~20A	30A
A	222	270	277
B	42	40	52
C	132	175	202
D	198	246	253
E	100	160	170
F	175	230	230
H	20	20	25
I	15	15	15
J	8	8	8
K	8	8	8
L	5	5	5
M	Ø8	Ø8	Ø8
N	M4	M4	M4